



Coffee Brief

Date: August 11, 2023

Preparedness Levels & Alaska Fire Activity

Alaska	3
National	3

<p>Light Initial Attack Activity</p> <p>New Fires and Acres: 0 fires for 0 acres</p>

There are currently 14 staffed fires with 994 personnel. Yesterday's large fire growth was ~14,705 acres

Sources: National and AICC Situation Report, AICC Aircraft Logs

Resources

Aviation within Alaska	Total
Air Tactical	1
ASM	1
BirdDog	4
Lats	5
FireBosses	4
Scoopers	2
SMKJ	3
Utility AC	4
Helicopter, Type 1	1
Helicopter, Type 2	9
Helicopter, Type 3	5
Total Aircraft	39

Crews Committed within Alaska	
Type2IA	1
Type 1	4
Type 2	21
Type 1 Module	
Type 2 Module	1
Suppression Module	6
Total Crews	33

Incident Mangement Teams in Alaska	
CIMT	
IMT 1	
IMT 2	2
IMT 3	1
Total IMTs	3

AVIATION

- No tactical flight requested or flown.
- Red flag exercises today through 8/25.

AIRSPACE/TFRs

- **#201/290(FAS):** 3/0384
- **#257(FAS):** 3/5014
- **#296(FAS):** 3/0799

SMOKEJUMPERS

Anticipated smokejumpers available: ~25
SMKJ's committed: 34

Smokejumper Demobilizations

Yesterday:

Planned for today:

- **#346(UYD):** 6

CREWS

- 23 pending crew requests.
- Pioneer Peak IHC en route to Lost Horse Creek today.
- Midnight Sun IHC available tomorrow, Saturday, 8/12.
- Chena IHC returning to AK 8/12, available Sunday 8/13.
- Gannett Glacier available 8/15.

NICC JET MOVEMENT

Jet #1

- Crews at Incident.
- All crews extended.

Crew	Incident	C #	Status	Mob	Length	Demob	Extension Approved
Union IHC	201 - McCoy Creek	C-1	At Incident	7/30	21	8/20	Yes
Lassen IHC	257 - Teklanika	C-2	At Incident	7/30	21	8/20	Yes
Shasta IHC	257 - Teklanika	C-3	At Incident	7/30	21	8/20	Yes

Jet #2

- Crews at Incident.

Crew	Incident	C #	Status	Mob	*Length	*Demob
WY East Wildlands T2C258	296 - Lost Horse Creek	C-6	At Incident	8/6	21	8/27
Franco Reforestation T2C052	257 - Anderson	C-7	At Incident	8/6	21	8/27
N. Pacifico Reforestation T2C521	201 - McCoy	C-8	At Incident	8/6	21	8/27
North Pacific T2C157	191 - Pogo Mine Rd	C-9	At Incident	8/6	21	8/27
Willamette Val Reforestation T2C567	261 - Sand Lake	C-10	At Incident	8/6	21	8/27

* TBD per extension process

Jet #3

- Crews at Incident

Crew	Incident	C #	Status	Mob	*Length	*Demob
CRW2 - T2C247 West Coast Reforestation	201 - McCoy Creek	C-10	At Incident	8/8	21	8/29
CRW2 - T2C062 Franco Reforestation	296 - Lost Horse Creek	C-9	At Incident	8/8	21	8/29
CRW2 - T2C063 Franco Reforestation	257 - Teklanika	C-15	At Incident	8/8	21	8/29
CRW2 - T2C064 Franco Reforestation	299 - Mount Hayes	C-1	At Incident	8/8	21	8/29
CRW2 - T2C248 West Coast Reforestation	296 - Lost Horse Creek	C-7	At Incident	8/8	21	8/29

* TBD per extension process

Jet #4

- AICC placed request to NICC, for 3 T1 crews - Needed date 8/12

OVERHEAD/TEAMS

- 50 pending overhead requests.
- North Star SMOD is done for the season upon return.

TEAM	INCIDENT	O#	IC	Status	Current Location	Mob	Duration	LWD	Extension
IMT2 GB Team 3	Teklanika River	O-1	Brett Waters	At Incident	Anderson, AK	7/31	21	8/20	Yes
IMT2 AK Green	Lost Horse Creek	O-2	Peter Butteri	At Incident	Fairbanks, AK	8/4	14	8/18	Strategy meeting 8/11
IMT3 - Local ad hoc AK	Pogo Mine Road/ Mt Hayes		Casey Boesflug	At Incident	Delta, AK	8/9	14	8/23	

Source: IROC Reports, [National Smokejumper Status Report](#), AK Incident Aircraft Tracking Spreadsheet & AICC Documentation, 2023 IMT Tracking Report

Weather Summary

Yesterday's fire weather scenario over Alaska was problematic for Initial Attack, much less so for the behavior of existing fires. A significant outbreak of lightning yesterday has the potential to start new fires in the central Interior where deeper fuels are dry enough for lightning to cause new ignitions. Though the atmosphere is comparatively moist so thunderstorms will drop wetting rains, these are fast-moving cells that may not dampen fuels significantly. A similar convective pattern is possible on today.

High pressure over northwest Alaska stretching across the Brooks Range will keep warm temperatures across the north, with low 80s expected in the northeast Interior and 70s in the central and northwest Interior. Relative humidities will not be particularly dry, staying above 35%. Easterly winds will be breezy in the northeast Interior today, gusting to around 20 mph. These winds are expected to strengthen today and more so on Saturday across a wider swath of the Interior. Spread potential on existing fires will become more of a concern by Saturday.

The long-range forecast shows little change in the overall pattern. Cool and damp weather will dominate southern Alaska while the northern Interior will remain fairly warm and dry. Thunderstorms of varying levels of moisture will continue throughout the Interior.

Source: Alaska 7-Day Outlook

Fuels/Fire Potential

Fine fuels have become substantially less burnable over much of Alaska due to wetting showers and thunderstorms. Some locations have escaped these rains, but the general trend is certainly moving toward less burnable surface fuels. The exception is the northeastern Interior, eastern Brooks Range, and the eastern half of the inland North Slope.

Deeper fuels are moderating slowly as well, but these fuels are still dry enough to support wildfire behavior in portions of the eastern Interior and the Copper River Basin. The driest deeper fuels in the state are on the Yukon Flats and downriver from Fort Yukon.

With moderate temperatures, comparatively high humidity, generally light winds, and wetting showers and thunderstorms continuing, extreme wildfire behavior is unlikely.

Source: Alaska 7-Day Outlook

Fuels Status [Alaska Fire and Fuels Map](#)

A Fuels and Fire Behavior Advisory was Issued 8/04/23

Fuels and Fire Behavior Advisory

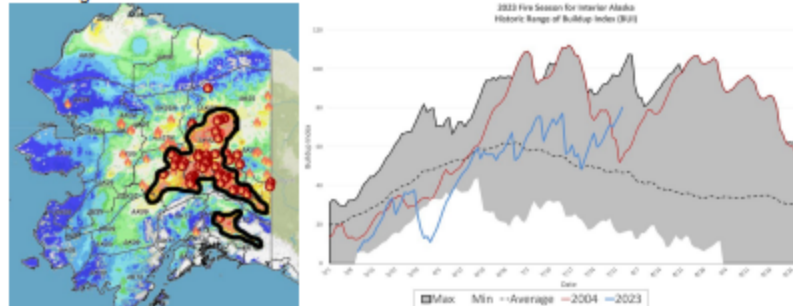
Central Interior, Eastern Interior and Copper River Basin

Valid: August 4 – August 18, 2023

Subject: Exceptional landscape flammability and widespread ongoing large fire growth.

Discussion: The Buildup Index (BUI) is the best indicator of seasonal severity and overall flammability of fuels in Alaska. It represents deeper drying in the duff layers and greater fuel availability. Large fire growth typically occurs from mid-June to mid-July when long days and rapid drying can produce elevated BUIs. The delayed onset of season-ending rains has resulted in BUI far above average for this time of year. There are already numerous fires near core population areas. New starts continue to be discovered in these areas and are resistant to containment.

Difference from normal conditions: The attached graph shows the current 2023 BUI trend for the Interior of Alaska compared to other busy fire seasons. This fire season started below average, but July was abnormally dry and the last week of July saw high temperatures with numerous lightning ignitions. While most seasons have seen wetting rains by this time, BUI remains elevated with no significant precipitation expected for this area in the forecast period. Multiple days of wetting rain adding up to more than one inch will be needed for lasting relief.



Concerns to Firefighters and the Public:

- Spruce stands are extremely flammable, will ignite readily, may exhibit rates of spread more than one mile per hour, spot prolifically up to ¼ mile or more, and exhibit intense crown fire behavior.
- Temperatures above 80 degrees and RH at or below 30% are important thresholds for rapid spread and crown fire behavior. Strong winds are not required for large fire growth in these conditions but forecast for the area includes sustained strong winds.
- Long-term drying has stressed green fuels may allow spread into riparian areas and less flammable hardwood forests. With continued drying, these fuel types may no longer be barriers to fire spread.

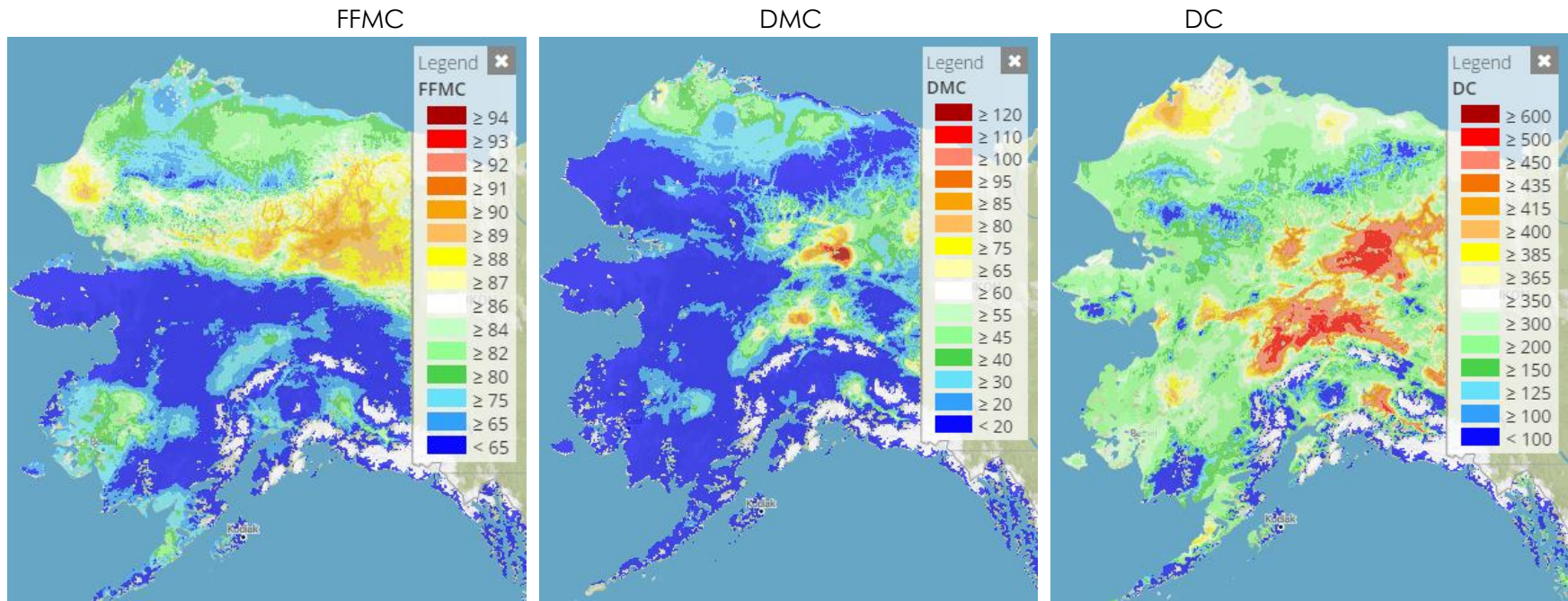
Mitigation Measures:

- Understand the triggers and thresholds for problem fire behavior.
- Monitor forecasts and indices to anticipate areas of increased flammability and extreme fire behavior.
- Maintain clear communications when working around active fires.

Area of Concern: Central and Eastern Interior to include the Yukon Flats, Tanana Valley and Copper River Basin.

Issued By: Alaska Interagency Coordination Center Predictive Services

Click on the following images for direct links to the maps.



When encountering a mismatch between a point value based on actual weather observations and the background grid, please discount the grid and go with the points.

For additional fuels information visit <https://akff.mesowest.org/>

Sources: AICC Predictive Services – Fuels/Fire Danger web page, Alaska Fire & Fuels web page

The Coffee Brief is posted at PLs 4 and 5 only.

